

Our Vinyl Decals arrive to the customer with their designs precisely pre spaced onto transfer paper, ready for installation.

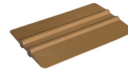
Things you will need:



Micro Fiber Towel



Masking Tape



Squeegee



Tape Measure



Needle Point Tool
(optional)



Grab a microfiber cloth and wipe away any possible dirt or dust to ensure a smooth surface.



Use the necessary measurements and ensure your vinyl lettering is appropriately positioned. Then place a strip of masking tape along the entire top of the graphics and the intended final location. However, if your custom vinyl decals design contains 3 or more colors, individual layers will be marked on opposite corners to ensure precise placement.



Grab the bottom edges, lightly pull the paper away from the secured edges, and peel the transfer paper from the backing revealing the vinyl adherent. If the vinyl is not coming off with the transfer sheet, use a needle point tool to assist the vinyl back onto the transfer paper.



Grab a squeegee, preferably; if not, a credit card will do, and begin placing your design slowly onto the surface while making sure no wrinkles appear; if so, lightly pull the vinyl from the surface and reset the design. When using the squeegee, it is best to press down in a top to bottom and left-to-right motion.



Ensure all air bubbles are absent from the design by pressing and dragging your squeegee from the center of your design and out.



Slowly remove the install liner, starting at the top corner. When transferring the design, the original masking tape will also detach.



Take the original back liner and press the squeegee onto the design firmly, removing any possible air bubbles and ensuring all design edges are firmly secure to their final location.

